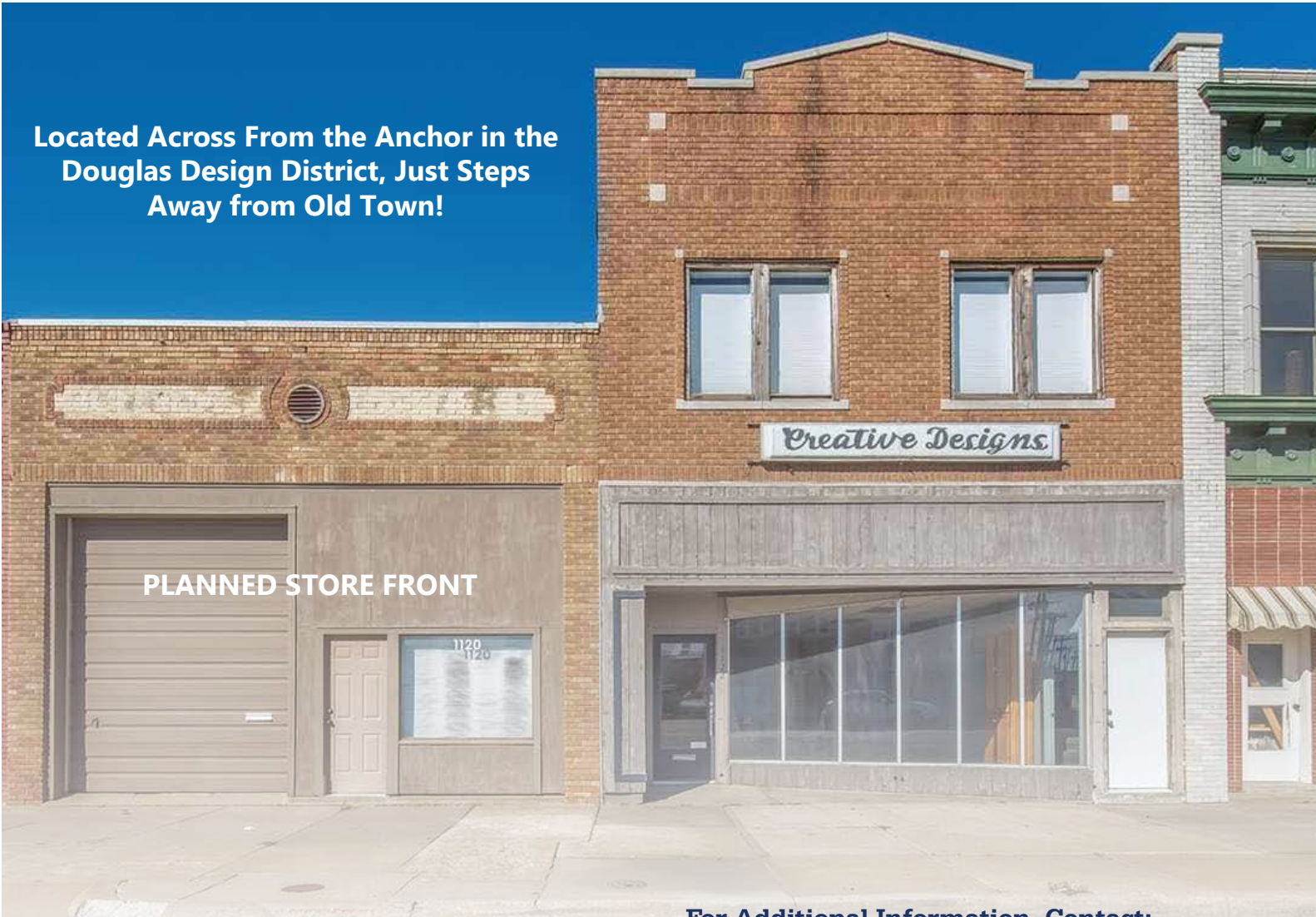


Douglas Design District Retail/Office Space

1120-1122 E. Douglas | Wichita, KS

For Lease

Located Across From the Anchor in the Douglas Design District, Just Steps Away from Old Town!



LEASE INFORMATION

1120 E. Douglas
3,025 SF
Negotiable Lease Rate

PROPERTY FEATURES

- PRIME Douglas Location with Planned Store Front
- Perfect for Retail, Office, Restaurant, Bar, etc.

1122 E. Douglas
2,971 SF
Negotiable Lease Rate

PROPERTY FEATURES

- PRIME Douglas Location with Existing Store Front
- Perfect for Retail, Office, Restaurant, Bar, etc.
- Apartment on 2nd Floor

InSite
Real • Estate • Group

Like/Follow us!



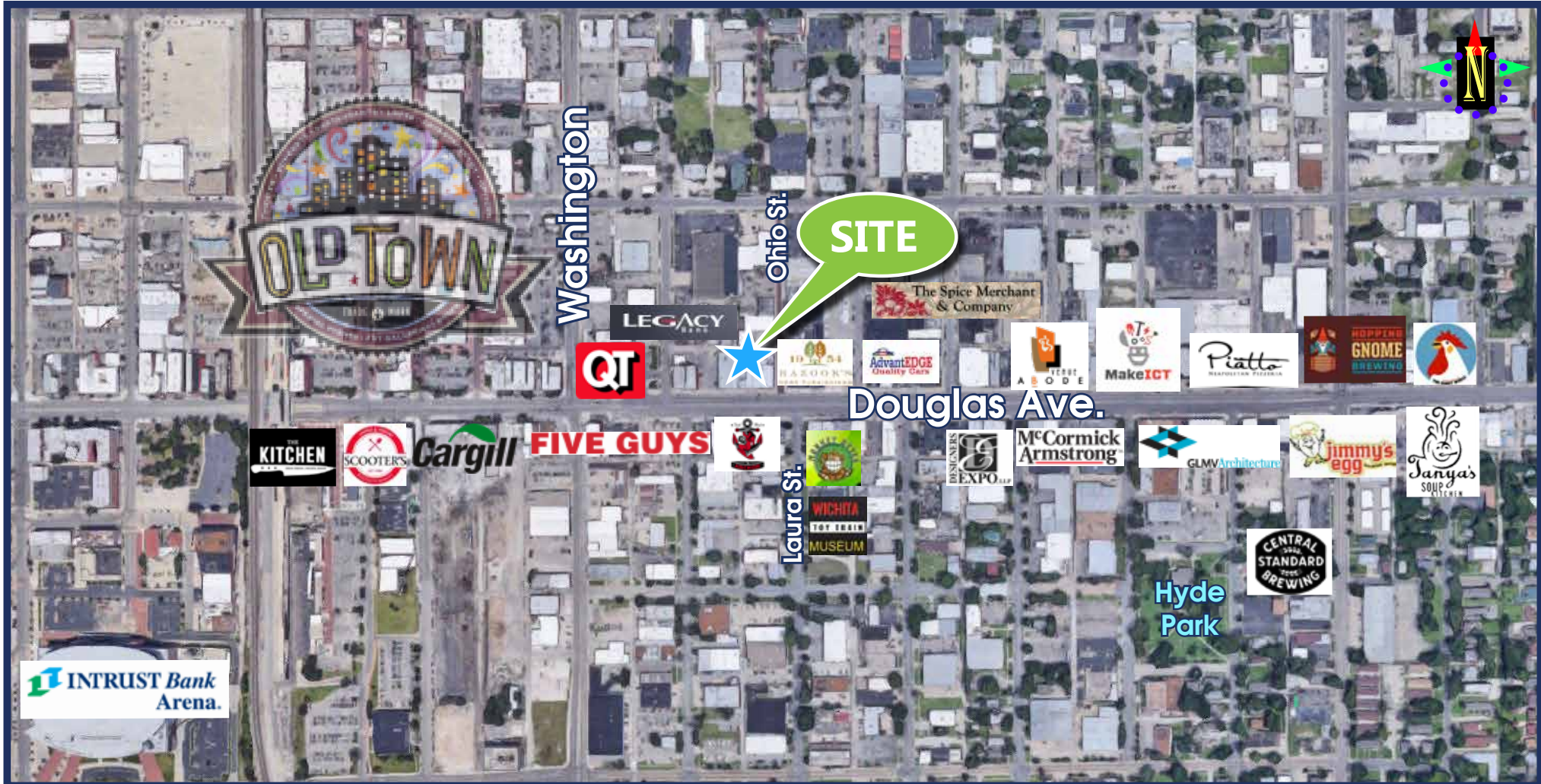
For Additional Information, Contact:

Matt Hiatt, MBA
(316) 618-1100
Wichita, KS
mhiatt@insitere.com

Douglas Design District Retail/Office Space

1120-1122 E. Douglas | Wichita, KS

For Lease



AREA NEIGHBORS

InSite
Real • Estate • Group

Like/Follow us!



Cargill
The Anchor
Jimmy's Egg
Tanya's Soup Kitchen
Hopping Gnome Brewing

INTRUST Bank Arena
Central Standard Brewing
ABODE Venue
Razook's Furniture
Scooters Coffee

QuikTrip
Make ICT
The Spice Merchant
GLMV Architecture
Legacy Bank